




KS1



# Phonics Screening Check

A guide for parents.



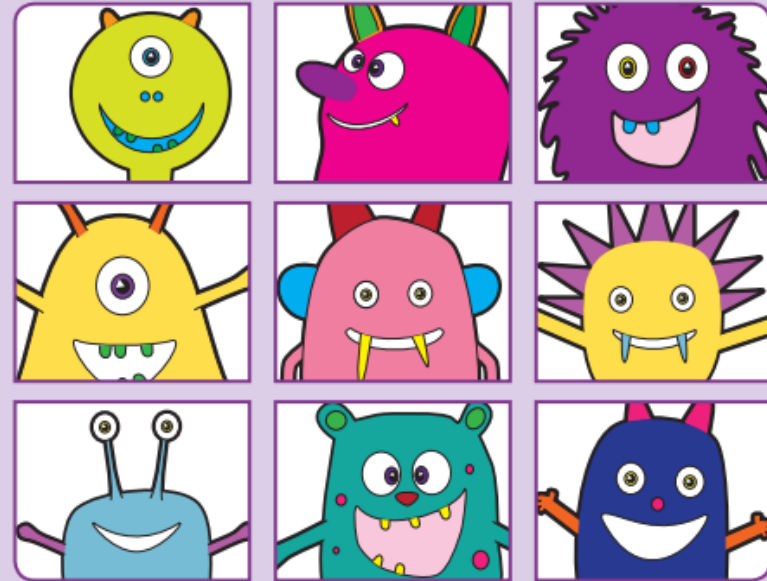
# What is the aim of the check?

The Statutory Phonics Screening Check is an assessment to confirm whether your child can use their phonics skills they have learned up to the end of Year 1. It will also identify individual children who require extra phonics help in order to improve their reading skills.

## Key stage 1

### Phonics screening check

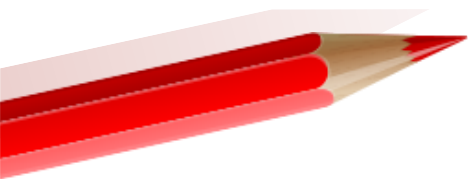
Pupils' materials



# What do we expect children to do?



- The test contains **40 words**. The list of words the children read is a combination of **20 real words** and **20 pseudo words** (nonsense words).
- The pseudo words will be shown to your child with a picture of an alien. Nonsense words are an established assessment method of all schools as a national requirement, and are included in all phonetic programmes. They are included because they will be new to all pupils, so there will not be a bias to those with a good vocabulary knowledge or visual memory of words. This is a test of a child's ability to decode using phonics, it is not reading test. Children who can read non-words should have the skills to decode almost any unfamiliar word.
- Some of the graphemes used in the check represent a number of different phonemes. When decoding a real word in the check, the pupil has to select the correct phoneme for the word, for example the 'ow' in 'blow' should not be pronounced as the 'ow' in 'cow'. However, when decoding a pseudo-word, all plausible alternative pronunciations are acceptable. Valid alternative pronunciations related to regional accents are acceptable in the relevant pseudo-words.



**THIS IS NOT A READING TEST**

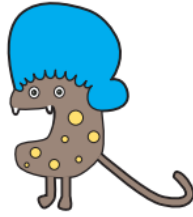
# Example words



Section 2

Alien/Pseudo  
words

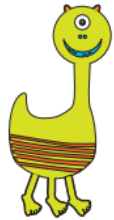
var



slirt



weaf



pobe



Section 2

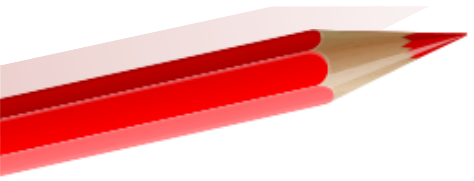
twice

gloom

turn

mode

Real words



# Phonics Screening Check details



## Who will administrate the check?

A member of staff who is trained in phonics and known to the pupil must administer the check on a one-to-one basis in a quiet space. This will be me, Miss Apsey!

## How long will the check take?

The Screening Check shall take approximately **10 minutes** per child, although all children are different and will complete the check at their own pace. We tailor it to each child, depending on need, with an optional break if it takes a while.

## What is the pass mark for the Phonics Screening Check?

For the past phonic screening checks the pass mark has been **32/40**.

# When will the screening happen?




June 2022							^	v
Mo	Tu	We	Th	Fr	Sa	Su		
30	31	1	2	3	4	5		
6	7	8	9	10	11	12		
13	14	15	16	17	18	19		
20	21	22	23	24	25	26		
27	28	29	30	1	2	3		

Every Year 1 child in the country will be taking the Phonics Screening Check **during the week commencing 6<sup>th</sup> June**. The Year 2 children who did not pass the check in November 2021, will retake the test.

Those Year 1 children who do not pass the check will be retake the check when they are in Year 2, in June 2023.

The results will be reported to parents as part of the annual school report.

# Using sound buttons



We use sound buttons to help children recognise the different parts of a word (single phonemes, digraphs, trigraphs and split digraphs). The children can mark the sound buttons underneath the words during the Phonics Check. The administrator is not allowed to mark them for the pupil.

buttons



single phoneme

A button tells us that a grapheme makes an individual sound.

cat

lines



digraph or trigraph

A line shows us that more than one grapheme (letters) joins together with another grapheme/graphemes to make a new sound.

rain

bridge



split digraph

A bridge, like a line shows us that more than one grapheme (letter) joins together to make a new sound BUT those letters are split.

cake

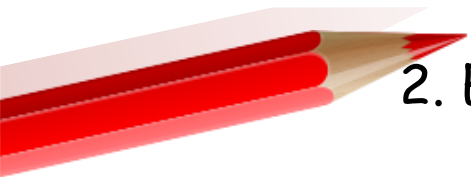
# How can you help?



The way in which you learnt to read, is probably very different from the way we teach children to read now, so here is a quick guide to some of the things you can do to help you child in preparation for the Screening Check.

1. Remind your child to look for the following when faced with an unfamiliar word (real or alien/pseudo)

- Look for any familiar digraphs first, then any trigraphs, then any split digraphs. What ever is left are single phonemes.



2. Encourage children to use sound buttons when breaking the words down.

- A dot for a single phoneme, a small line for a digraph/trigraph and a bridge for the split digraphs. These should all be placed under the graphemes letters in the word.





# Useful websites

Please refer to the Little Wandle Letters and Sounds website for correct pronunciation.

<https://www.littlewandlelettersandsounds.org.uk/resources/my-letters-and-sounds/engaging-parents/>



Phonics Play - Obb and Bob/Buried Treasure

<https://www.phonicsplay.co.uk/InteractiveResources.htm>



Thank you



Thank you for your ongoing support



Thank  
You!